

FIMR

Project Impact Update

Tracy Claveau, RN, BAN



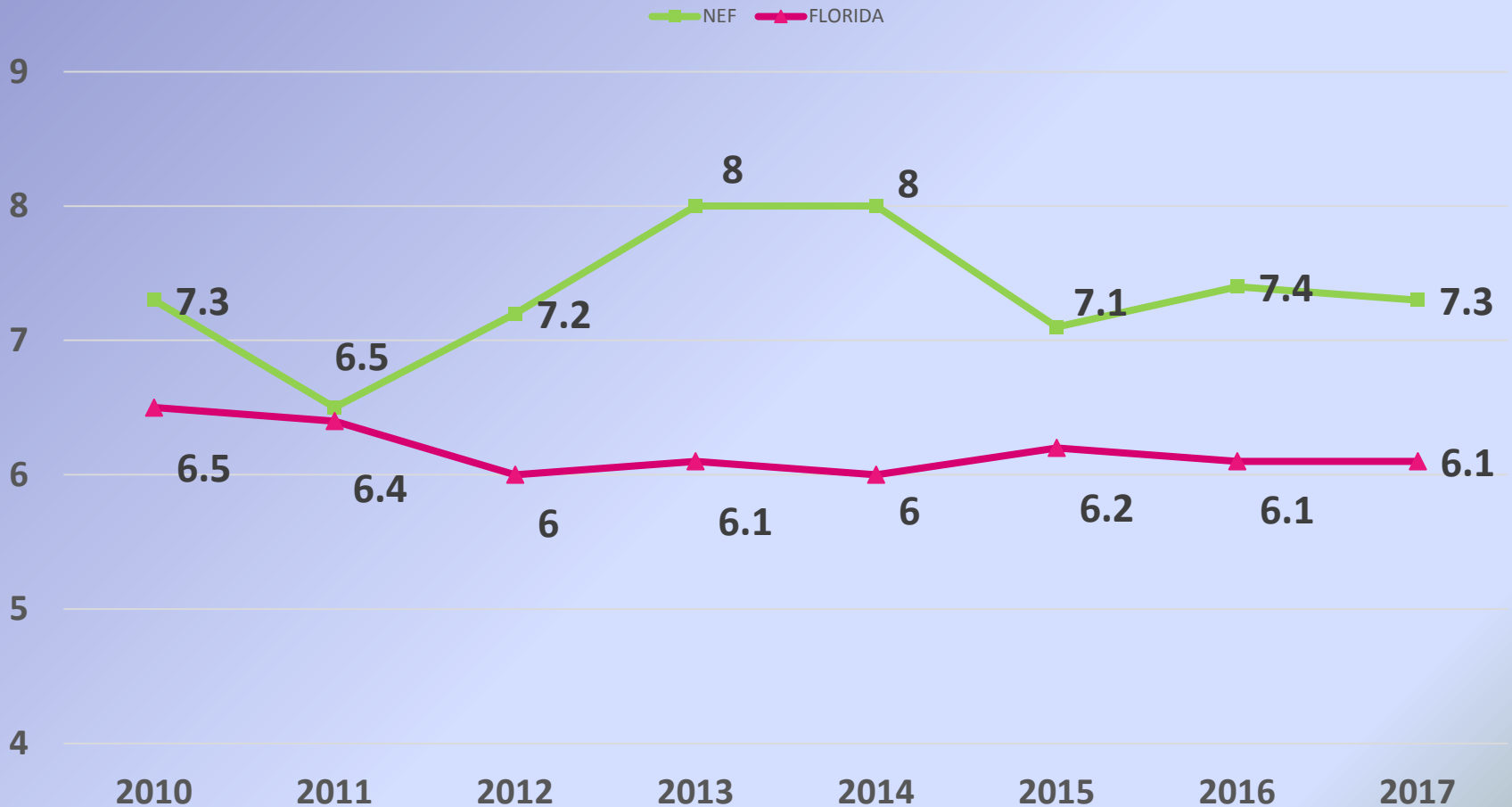
What is Infant Mortality?

The death of a baby before his or her first birthday.

The **infant mortality rate** is often used as an indicator to measure the health and well being of a population

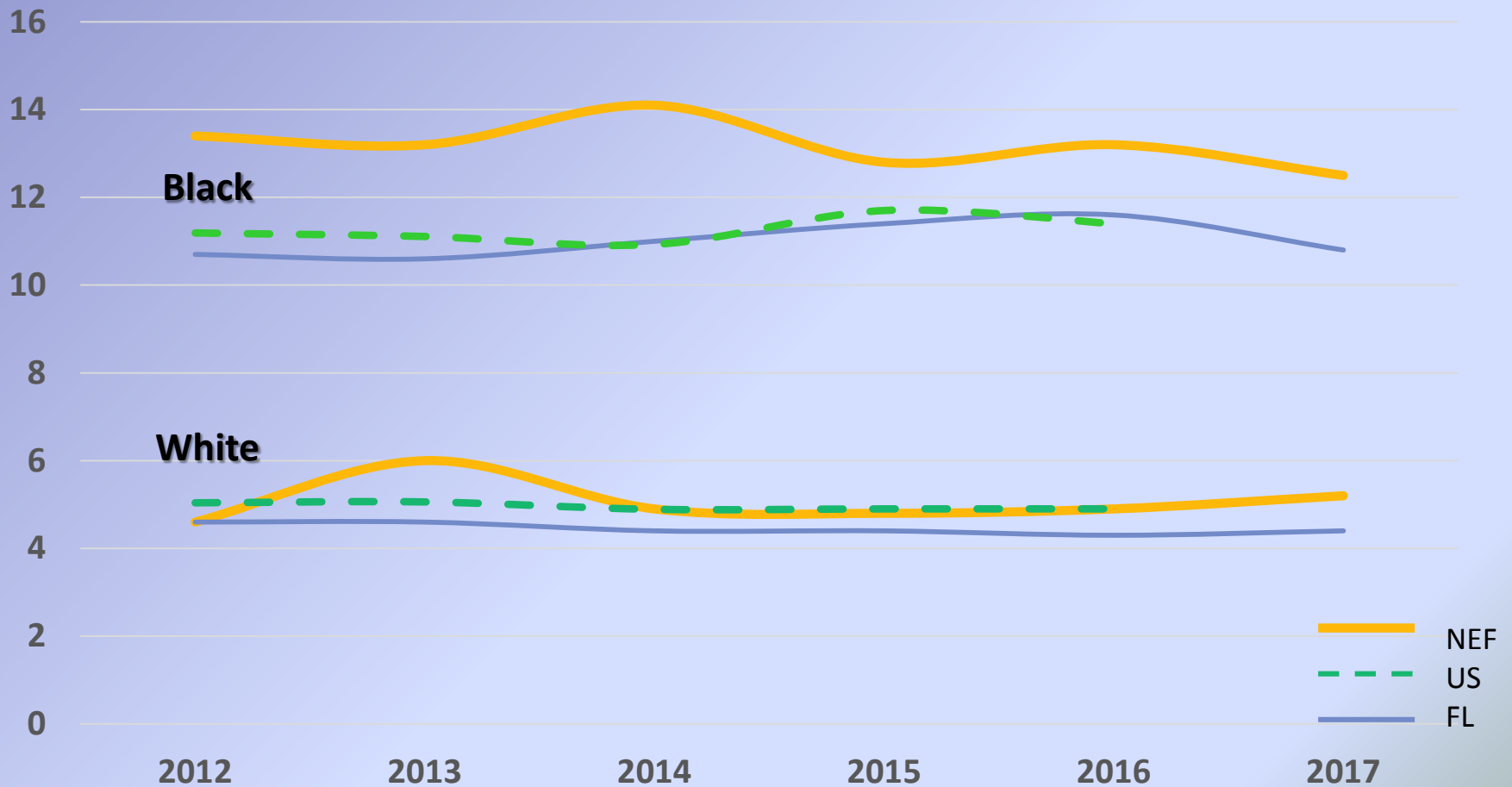
Infant Mortality Rates

Per 1000 Live Births

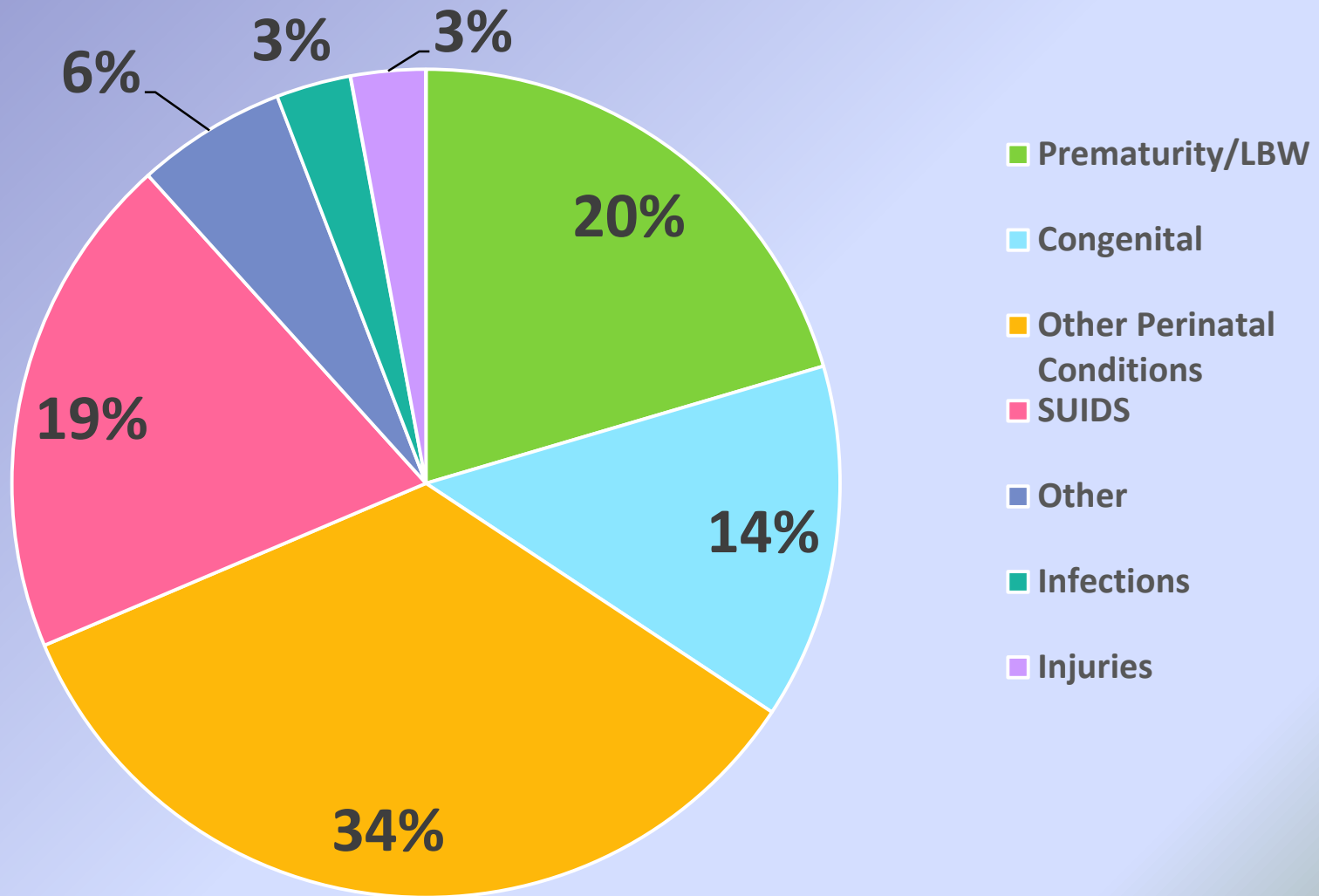


Infant Mortality Rate by Race

Disparities on a local, state and national level

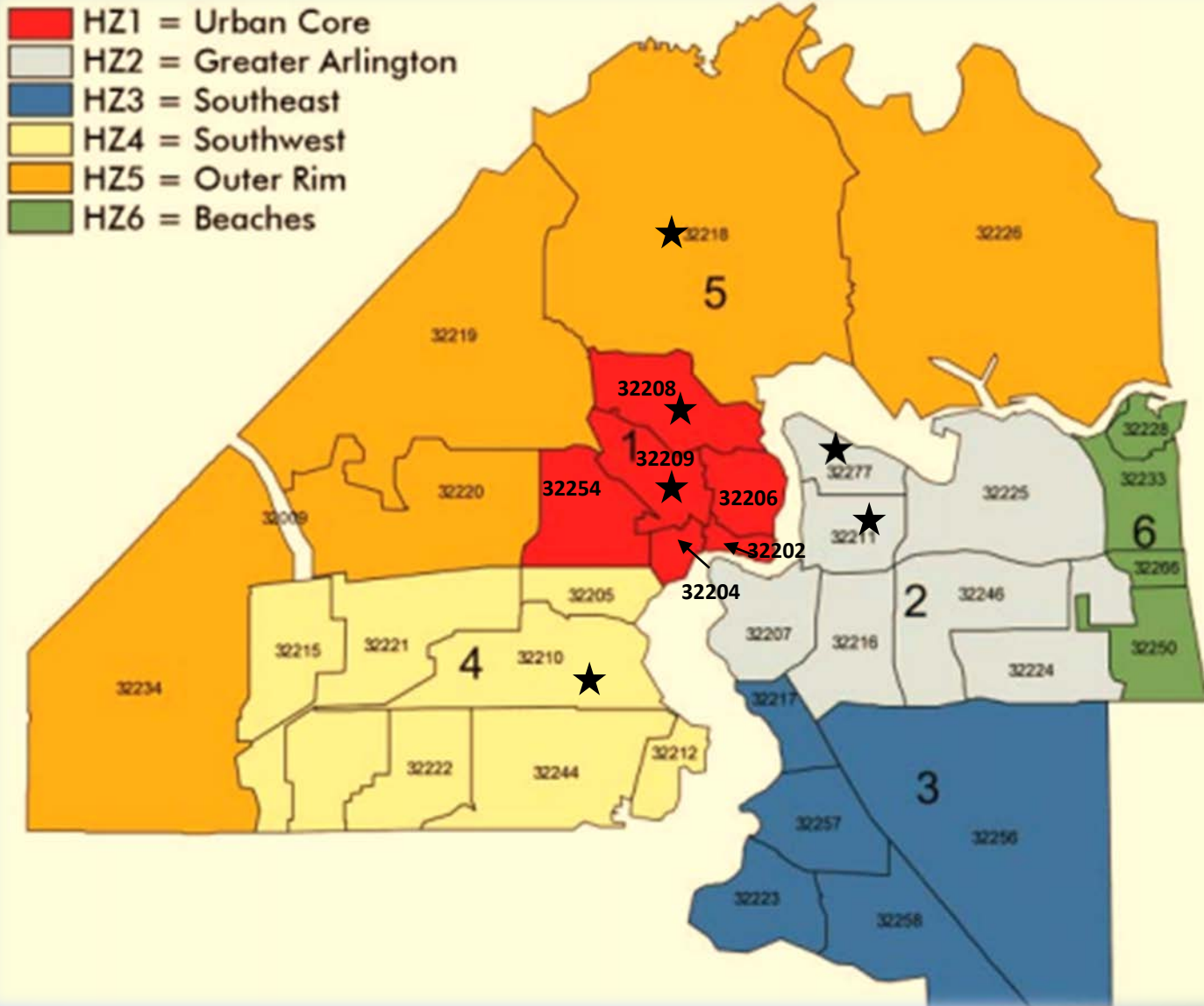


Causes of Infant Death, Northeast Florida

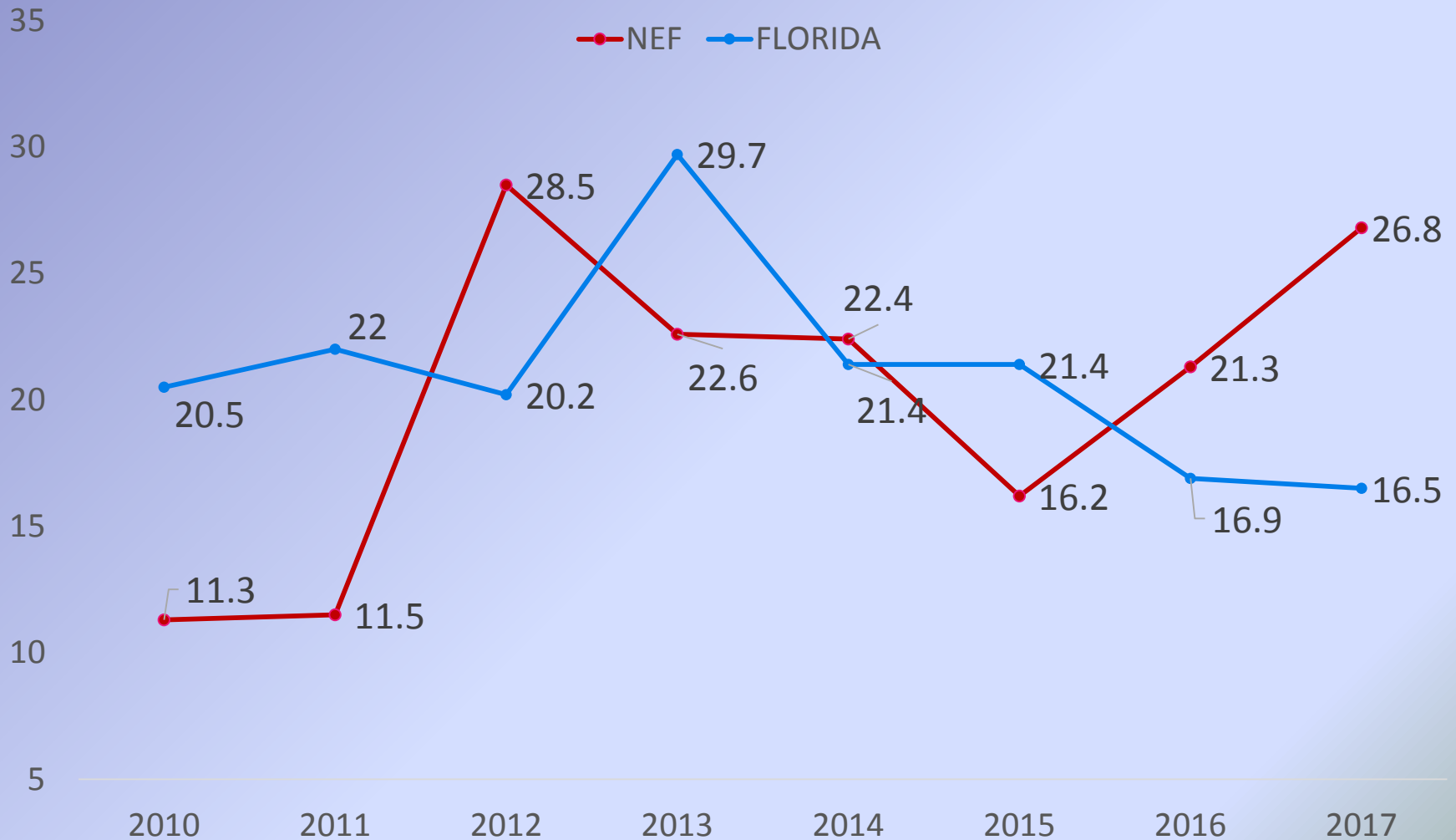


Leading Infant Mortality Rates

Duval County, 3 Yr Discrete Rates, 2009-2017



Maternal Mortality ratio per 100,000 live births, 2013-2017



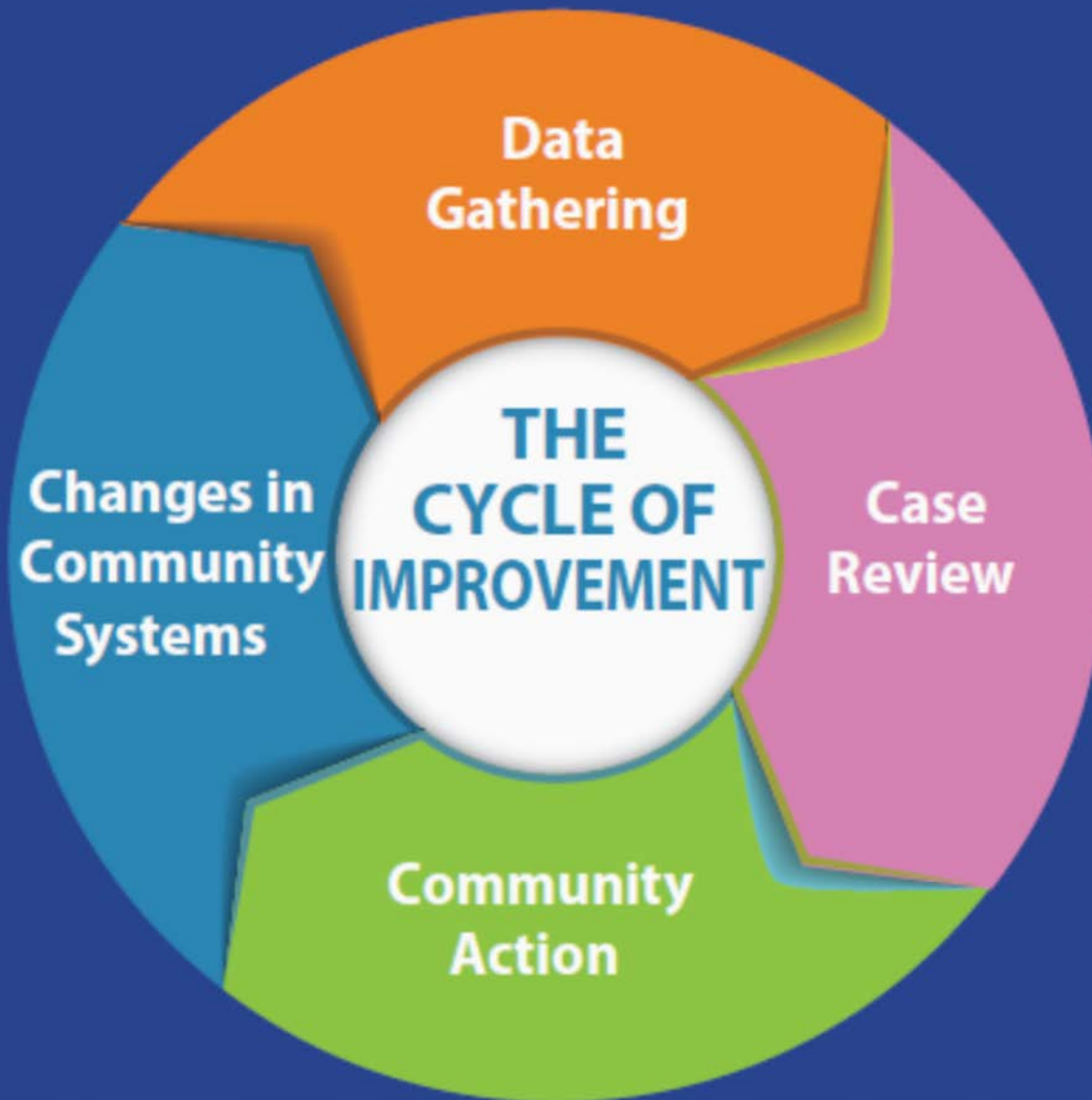
FIMR

Fetal and Infant Mortality Review

“to **determine specific** medical, social, financial and other **issues** that may have impacted the poor birth outcome”

“It’s not about finding fault, it’s about figuring out where the **system failed**”

THE FIMR PROCESS



SUIDs

Sudden Unexpected Infant Deaths

Most SUID are reported as 1 of 3 types of infant deaths

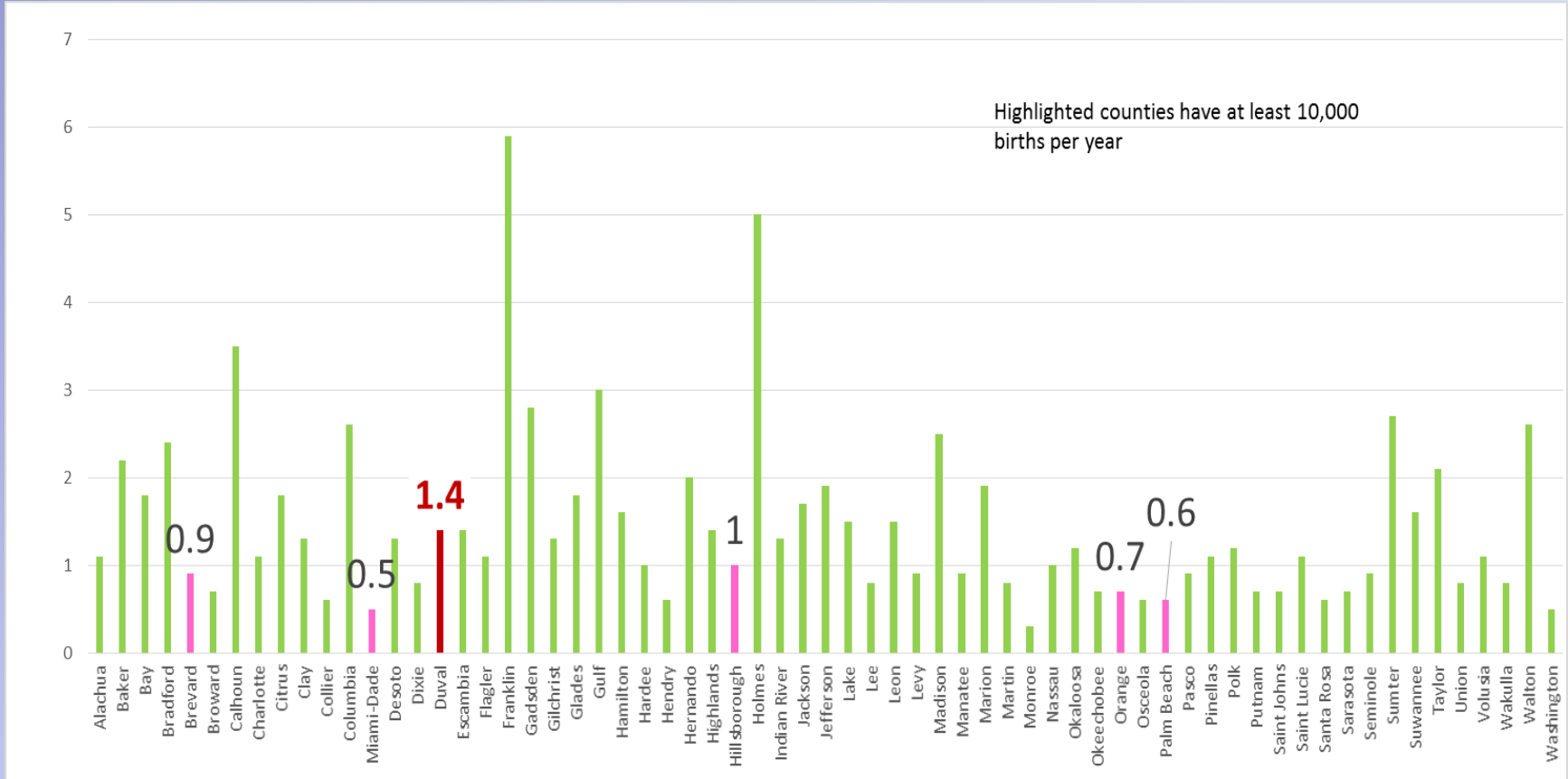
- ❖ **Sudden Infant Death Syndrome** cannot be explained after a thorough investigation is conducted, including a complete autopsy, examination of the death scene, and a review of the clinical history.

- ❖ **Unknown Cause** The sudden death of an infant that cannot be explained because a thorough investigation was not conducted and cause of death could not be determined.

- ❖ **Accidental Suffocation and Strangulation in Bed**
 - Suffocation by soft bedding
 - Overlay.
 - Wedging
 - Strangulation

SUIDs

Sudden Unexpected Infant Deaths 2010-2017



Social Determinants of Health

A FIMR Focus

Healthy People 2020 state SDOH are conditions in people's lives that affect a wide range of health, functioning, and quality-of-life outcomes and risks, the framework includes these 5 key areas.



Case Review 1

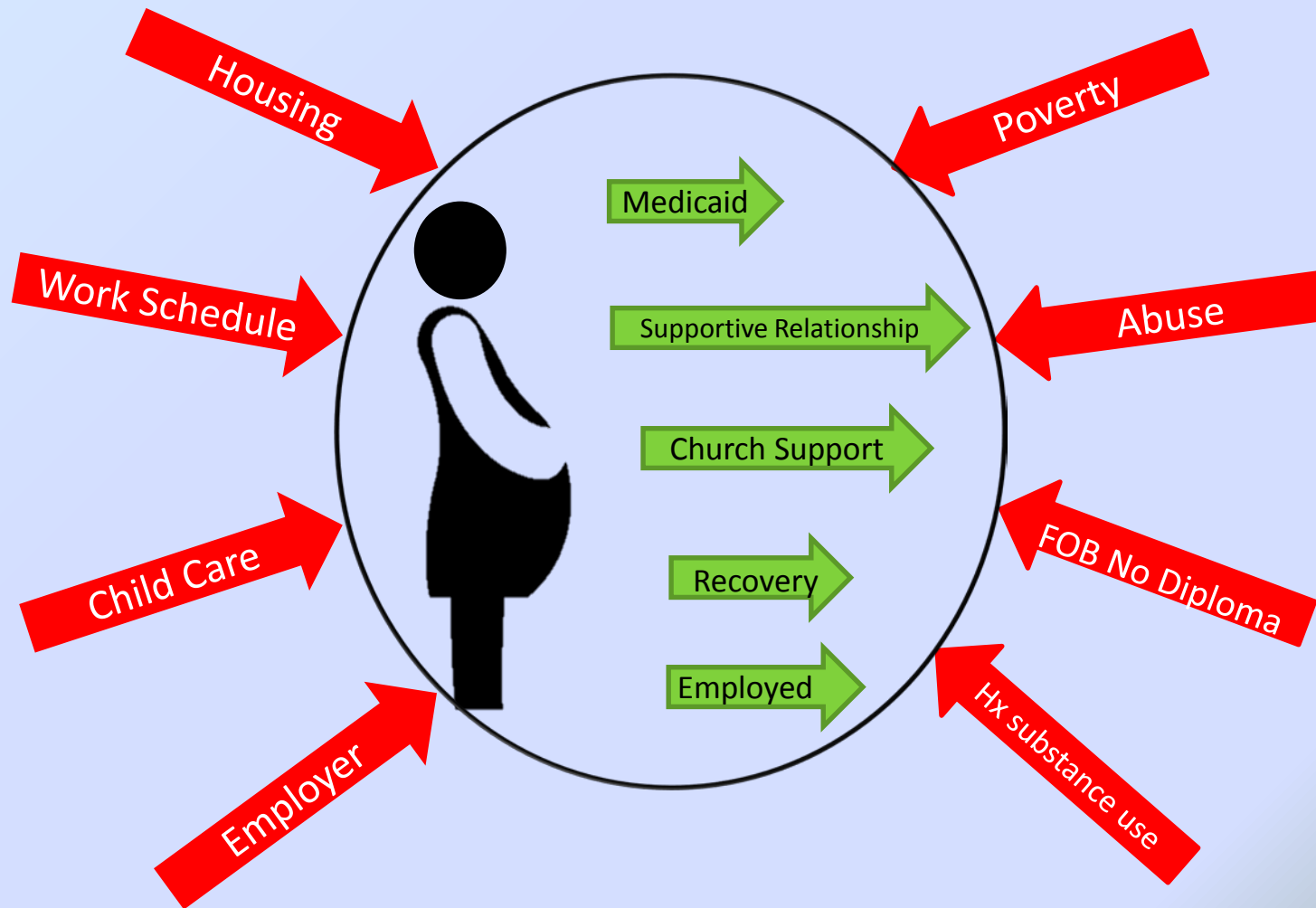
Sleeping Infant Death

Neighborhood	Health & Healthcare	Social & Community Context	Education	Economic Stability
<ul style="list-style-type: none"> Apartment with mold, water damage 	<ul style="list-style-type: none"> Medicaid Opioid addiction both parents MAT-in recovery both parents 	<ul style="list-style-type: none"> Stable relationship Family support Church Abuse in Family of Origin of both parents 	<ul style="list-style-type: none"> MOB: HS diploma FOB: No diploma Dyslexia 	<ul style="list-style-type: none"> Poverty Both parents employed, MOB worked nights Childcare Lost job



Case Review 1

Sleeping Infant Death



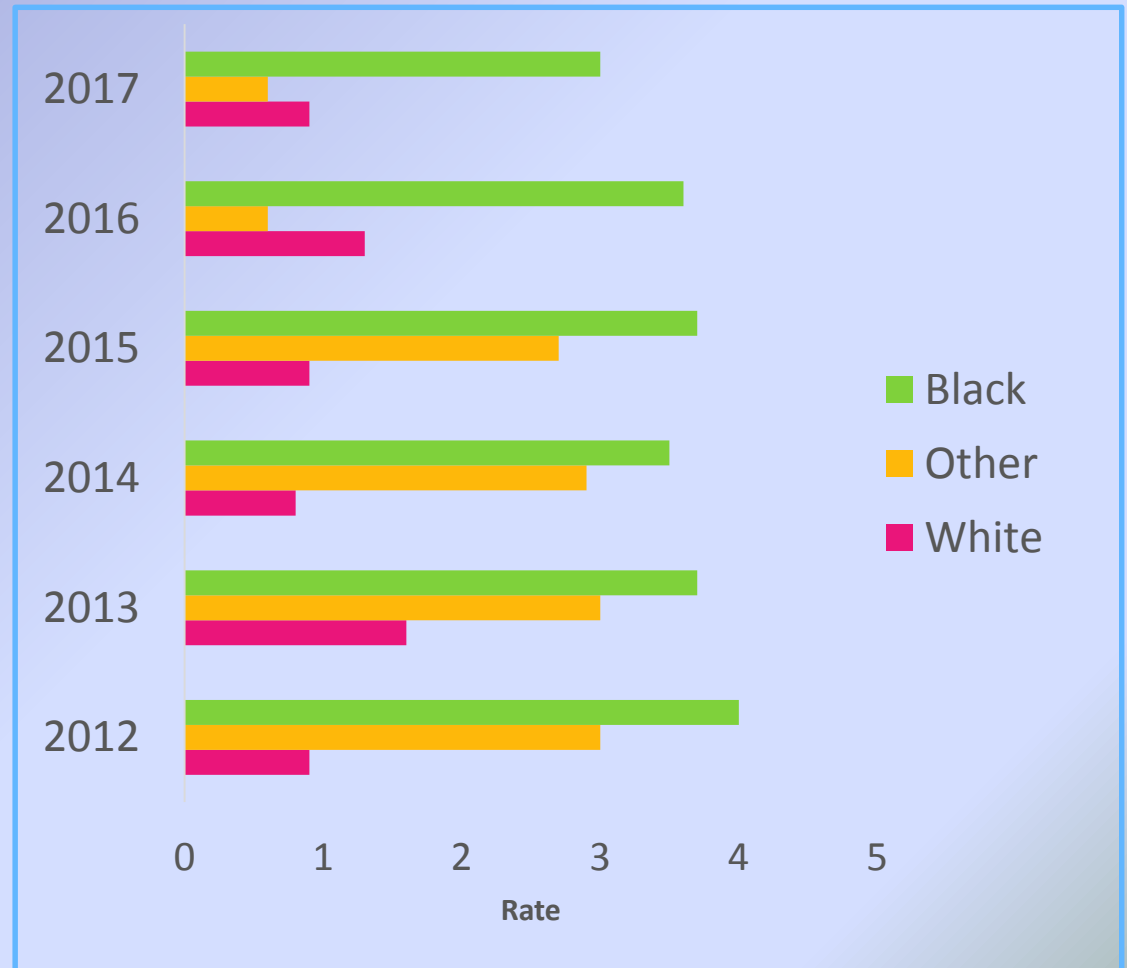
Adapted from:

Infant Mortality Rate Related to Prematurity and Low Birthweight (per 1000 live births)

Significant racial disparities exist in infant mortality related to prematurity and low birth weight babies.

In 2017 the March of Dimes report card gave Duval county an "F" grade for the number of premature infants born in the county. Over 11% of infants in Duval County are born premature.

Many do not survive, those that do may have life long challenges



Case Review 2

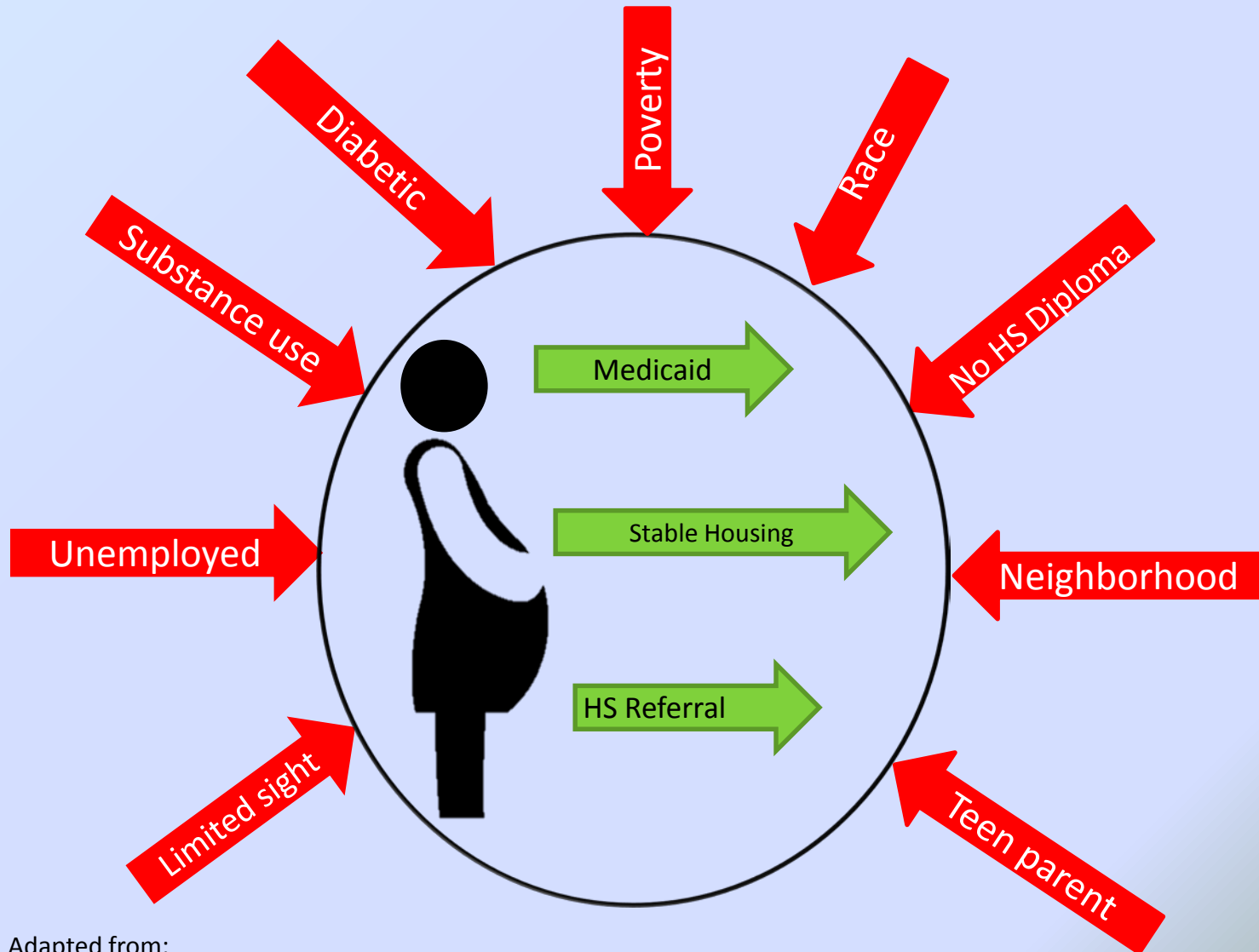
Premature Infant Death

Neighborhood	Health & Healthcare	Social & Community Context	Education	Economic Stability
<ul style="list-style-type: none"> • Crime/violence 	<ul style="list-style-type: none"> • Medicaid • 1st pregnancy at 16 • Partial blindness • Polysubstance abuse • Undesired pregnancy • Uncontrolled diabetes • Tubal ligation 	<ul style="list-style-type: none"> • Family Support • Lack of support system (other than family) • African American 	<ul style="list-style-type: none"> • No diploma 	<ul style="list-style-type: none"> • Poverty • Inadequate nutrition • Stable Housing



Case Review 2

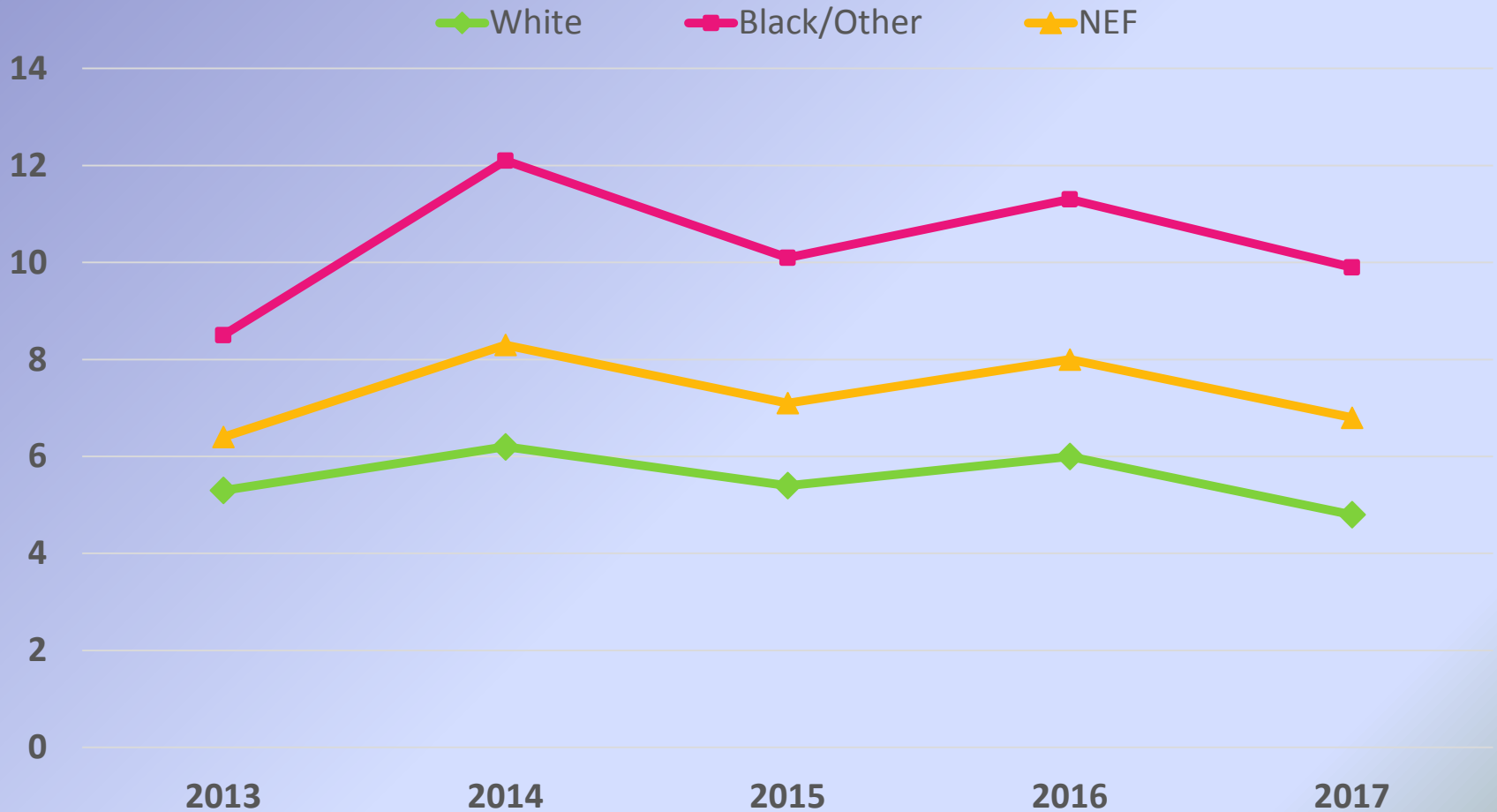
Premature Infant Death



Adapted from:

Fetal Deaths by Race

(stillborn at greater than 20 weeks of pregnancy)



Source: Florida CHARTS, Division of Public Health Statistics and Performance Management, Florida Department of Health

www.floridacharts.com

Case Review 3

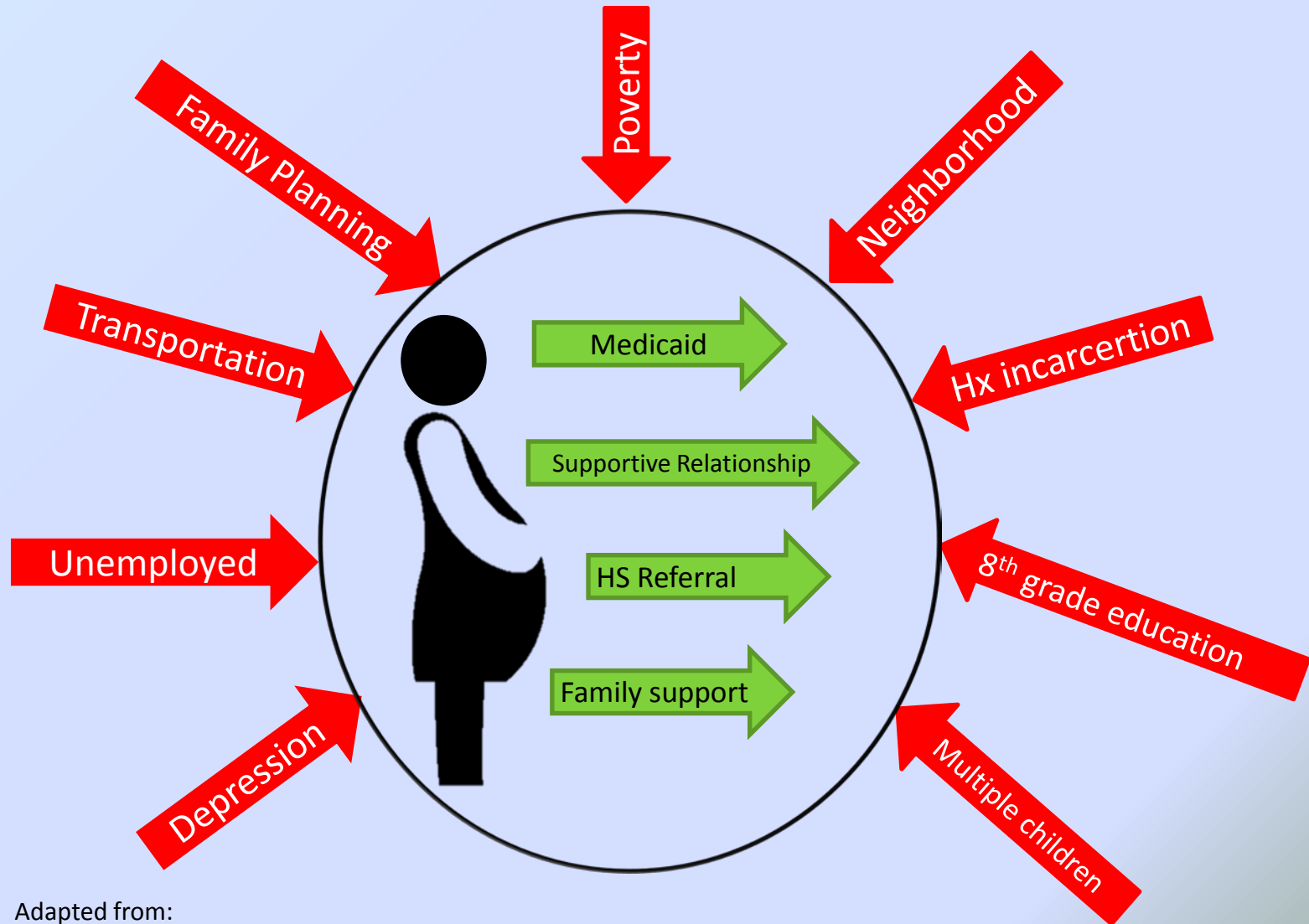
Fetal Death

Neighborhood	Health & Healthcare	Social & Community Context	Education	Economic Stability
<ul style="list-style-type: none">• Crime and violence	<ul style="list-style-type: none">• Medicaid• Depression• Lack of family planning	<ul style="list-style-type: none">• Family Support• Supportive relationship• Incarceration	<ul style="list-style-type: none">• 8th grade education	<ul style="list-style-type: none">• Unemployed• Poverty• Lack of transportation• 6 children



Case Review 3

Fetal Death



Adapted from:

Recommendations



There is no foot
too *small*

that it cannot leave an

imprint

on this

WORLD